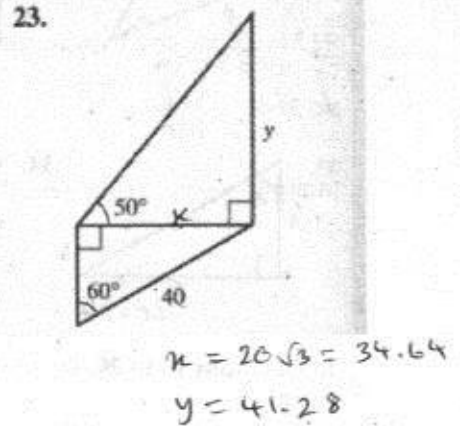
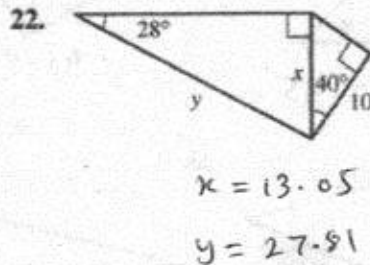
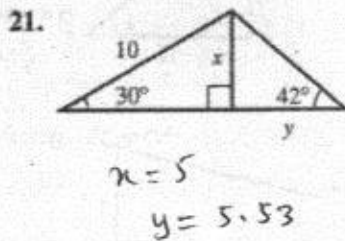
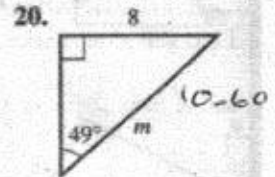
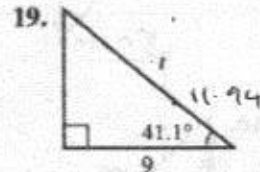
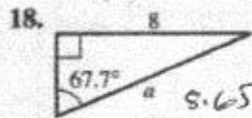
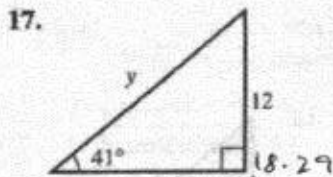
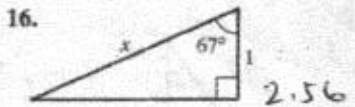
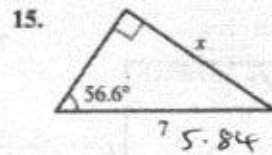
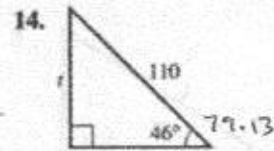
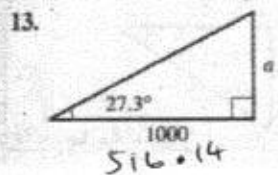
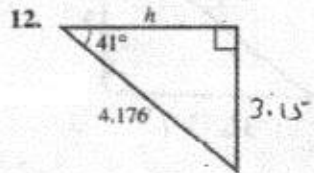
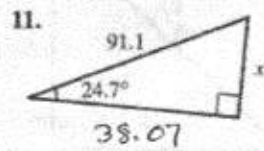
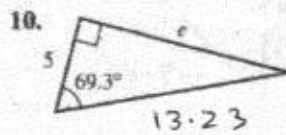
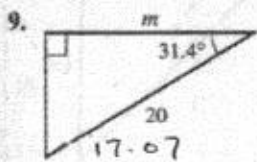
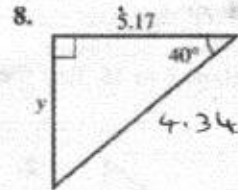
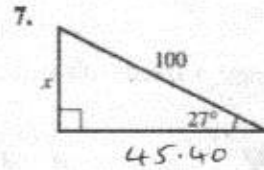
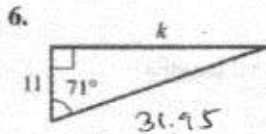
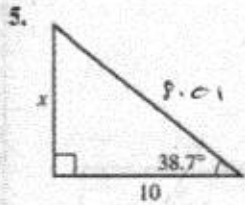
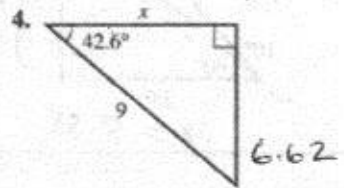
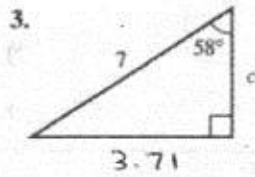
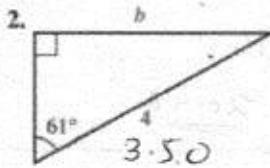
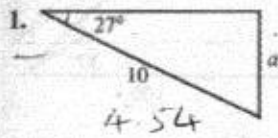


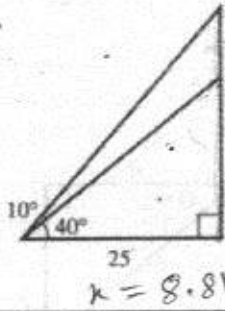
Trigonometry-1

Exercise A

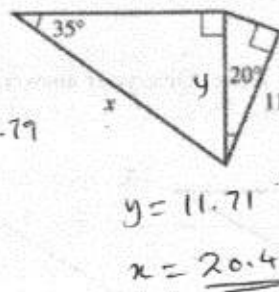
Find the lengths of the sides marked with a letter. Give your answers to three significant figures.



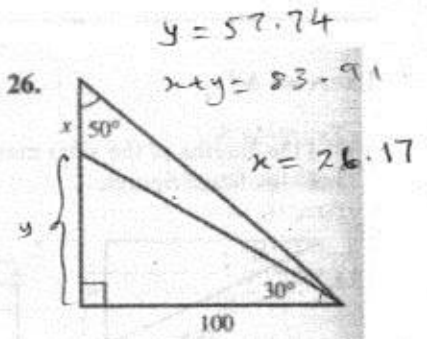
24.



25.



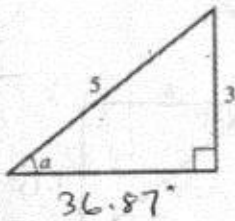
26.



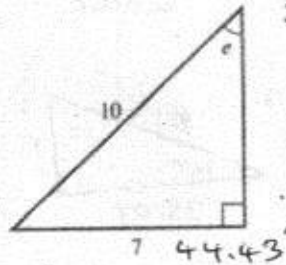
## Exercise B

For Questions 1 to 15, find the angle marked with a letter. All lengths are in cm.

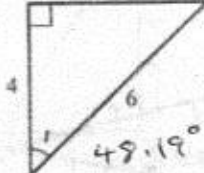
1.



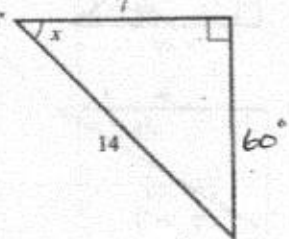
2.



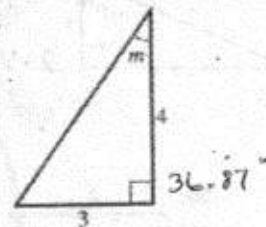
3.



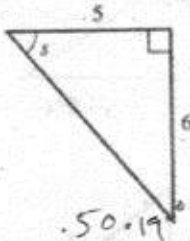
4.



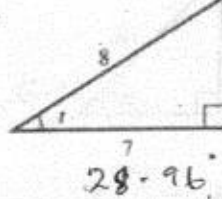
5.



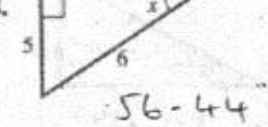
6.



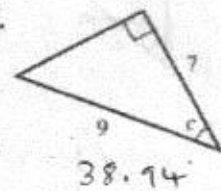
7.



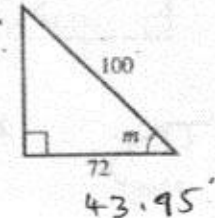
8.



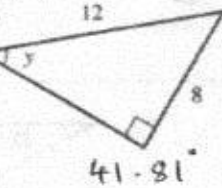
9.



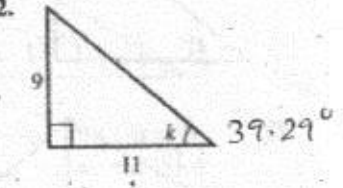
10.



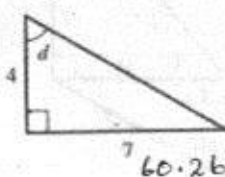
11.



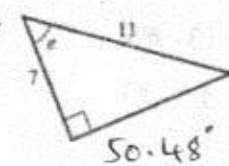
12.



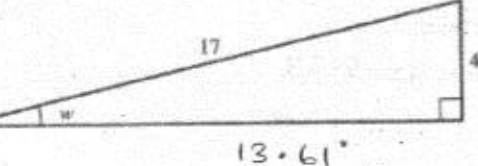
13.



14.

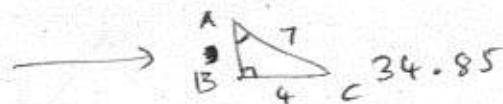


15.

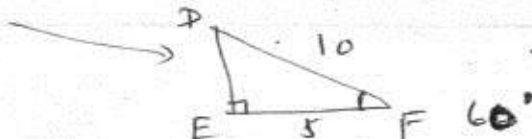


In Questions 16 to 20, the triangle has a right angle at the middle letter.

16. In  $\triangle ABC$ ,  $BC = 4$ ,  $AC = 7$ . Find  $\hat{A}$ .



17. In  $\triangle DEF$ ,  $EF = 5$ ,  $DF = 10$ . Find  $\hat{F}$ .



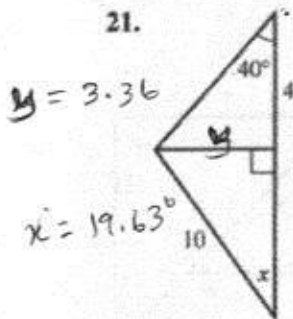
18. In  $\triangle GHI$ ,  $GH = 9$ ,  $HI = 10$ . Find  $\hat{I}$ .

19. In  $\triangle JKL$ ,  $JL = 5$ ,  $KL = 3$ . Find  $\hat{J}$ .

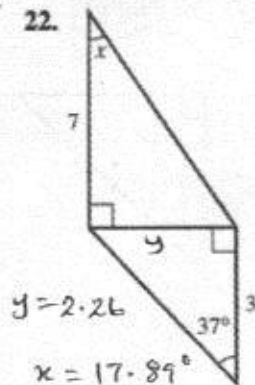
20. In  $\triangle MNO$ ,  $MN = 4$ ,  $NO = 5$ . Find  $\hat{M}$ .

In Questions 21 to 24, find the angle  $x$ .

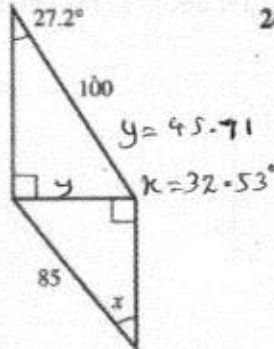
21.



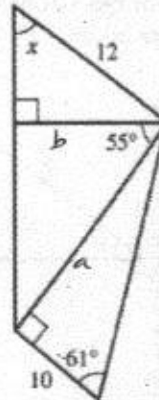
22.



23.

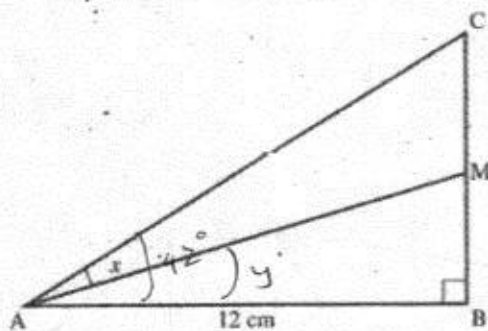


24.



25. In  $\triangle ABC$

$\hat{BAC} = 42^\circ$  and  $AB = 12$  cm.



M is the mid-point of CB.  
Find the angle  $x$  to 1 d.p.

$$BC = 10.80$$

$$BM = 5.40$$

$$y = 24.23$$

$$x = \underline{\underline{17.77^\circ}}$$